

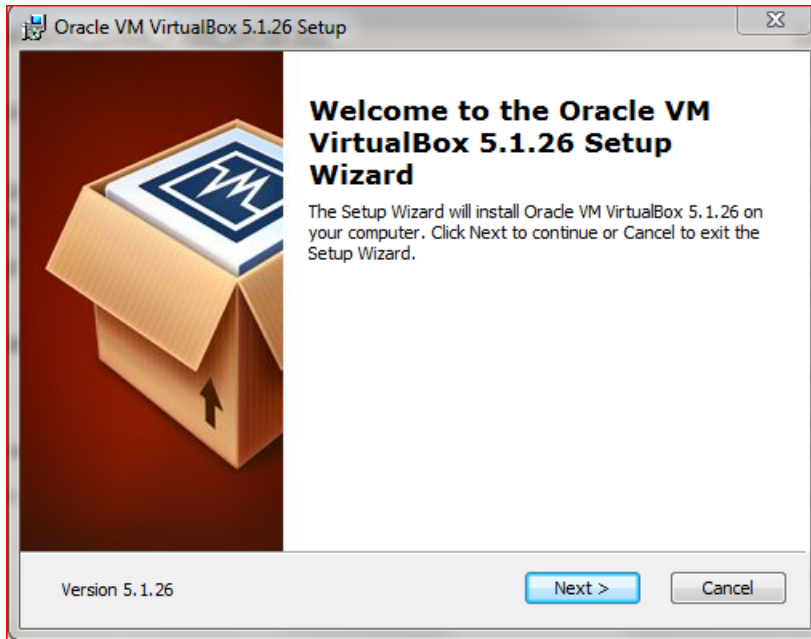
Preparing for the Storm (CTF)

Installing Kali in Virtualbox

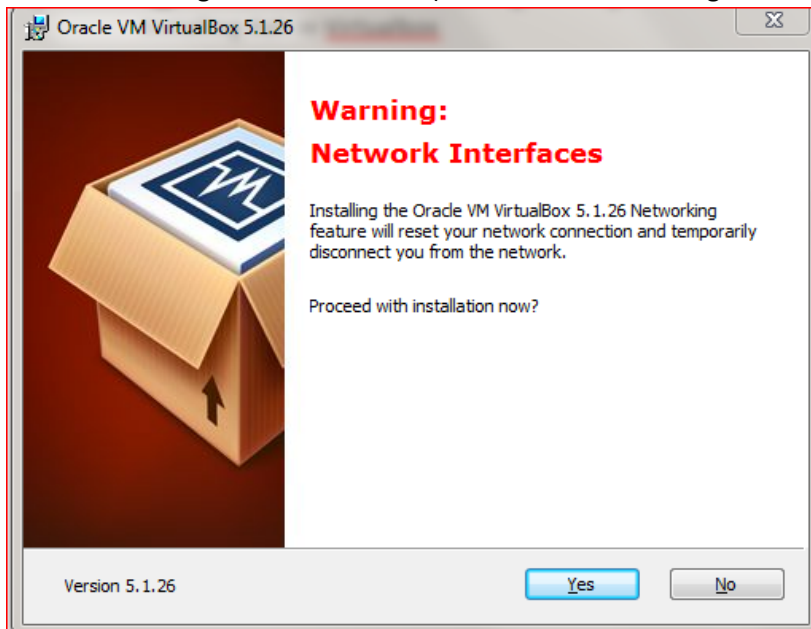
1. Installing Virtualbox

1.1. Download from <http://download.virtualbox.org/virtualbox/5.1.26/VirtualBox-5.1.26-117224-Win.exe>

1.2. Start the installer



1.3. Click Next throughout the installer. (Click Yes at the warning for Network Interfaces)



1.4. Click Install

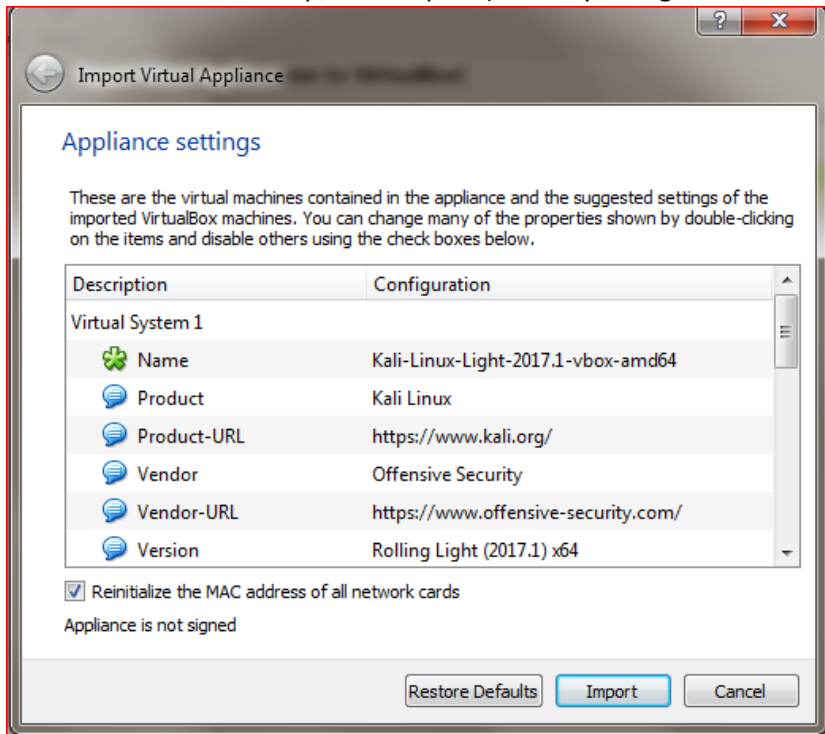
1.4.1. Accept any Driver install requests (Click Install)

1.5. Click Finish (With Start Oracle Virtualbox after installation unchecked)

2. Installing Kali (Using Light Kali Install via OVA, you may choose to do a more custom install)

2.1. Download from <https://images.offensive-security.com/virtual-images/Kali-Linux-Light-2017.1-vbox-amd64.ova>

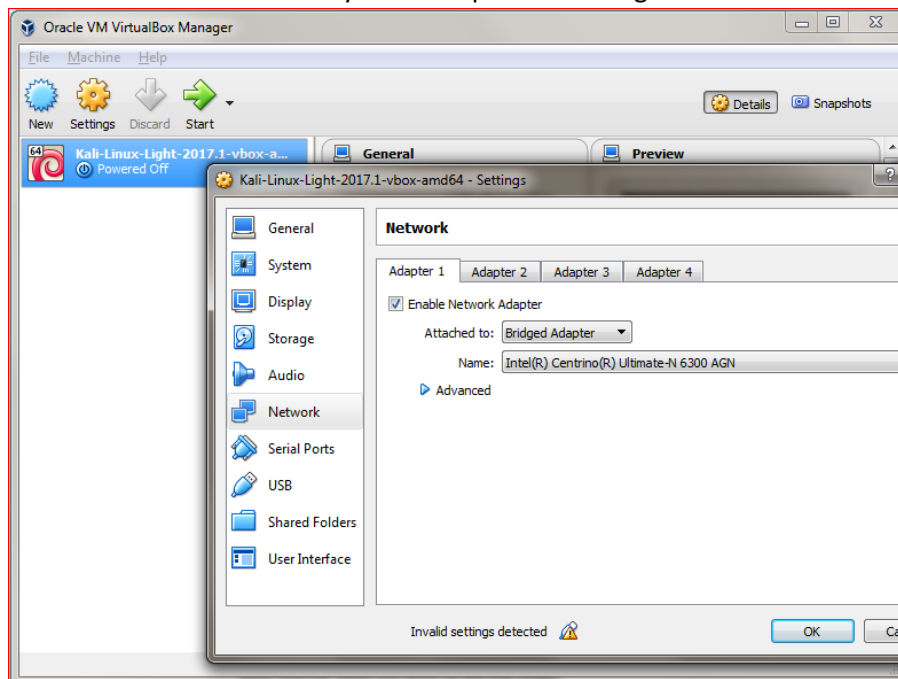
- 2.2. Find the file in your Downloads folder (Or wherever you designated), double click it
- 2.3. Once Virtualbox comes up, Click Import (You may change the RAM and CPU settings here)



- 2.4. Once the import is complete, click on the Kali image, and click Settings

2.4.1. Click Network

- 2.4.1.1. Select the Dropdown Under "Enable Network Adapter." Change it to Bridged Adapter. Be sure that the "Name" drop down below Bridged Adapter is your selected to be your current Wireless card (Usually default). You will know if it is right if you do not have the internet when you boot up the Kali image.



- 2.5. Click OK and Boot up the image by clicking "Start."
 - 2.5.1.If you get an error about USB 2.0 Follow these steps:
 - 2.5.2. Download
http://download.virtualbox.org/virtualbox/5.1.26/Oracle_VM_VirtualBox_Extension_Pack-5.1.26-117224.vbox-extpack
 - 2.5.3.Find it in your Downloads folder (or wherever you designated), double click it
 - 2.5.4.Click Install
 - 2.5.5.Scroll to the bottom and click Accept
 - 2.5.6.Click Yes for User Account Control
 - 2.5.7.Click OK.
 - 2.5.8.Click "Start" again
 - 2.6. When Kali shows the login screen use the username "root" and password "toor."
 - 2.6.1.Note: If you need to use your mouse outside of the Virtual Machine, press the right-ctrl button.
 - 2.7. Readjusting your window should make Kali fill the screen.
3. Installing tools for the CTF
 - 3.1. Open a terminal
 - 3.2. Type "apt-get update."
 - 3.3. When you can type again, type "apt-get install Wireshark burpsuite Metasploit-framework wordlists."
 - 3.3.1.Press 'q' when the manual page pops up
 - 3.3.2.Press Enter when the screen about dumpcap pops up
 - 3.3.3.Select "Yes" by pressing left arrow and then press Enter to allow non super users to capture packets.
 - 3.4. It is highly recommended to utilize wordlists from <https://github.com/danielmiessler/SecLists/tree/master/Passwords> as well as the Full Kali installations wordlists.
 - 3.5. You should now be able to go to <https://10.10.0.100:8080> to get to the scoreboard when you are connected to Storm CTF WiFi.